

PART OF S.W. 1/4  
SECTION 33, T.7N., R.1W., S.L.B. & M.

TAXING UNIT: 10

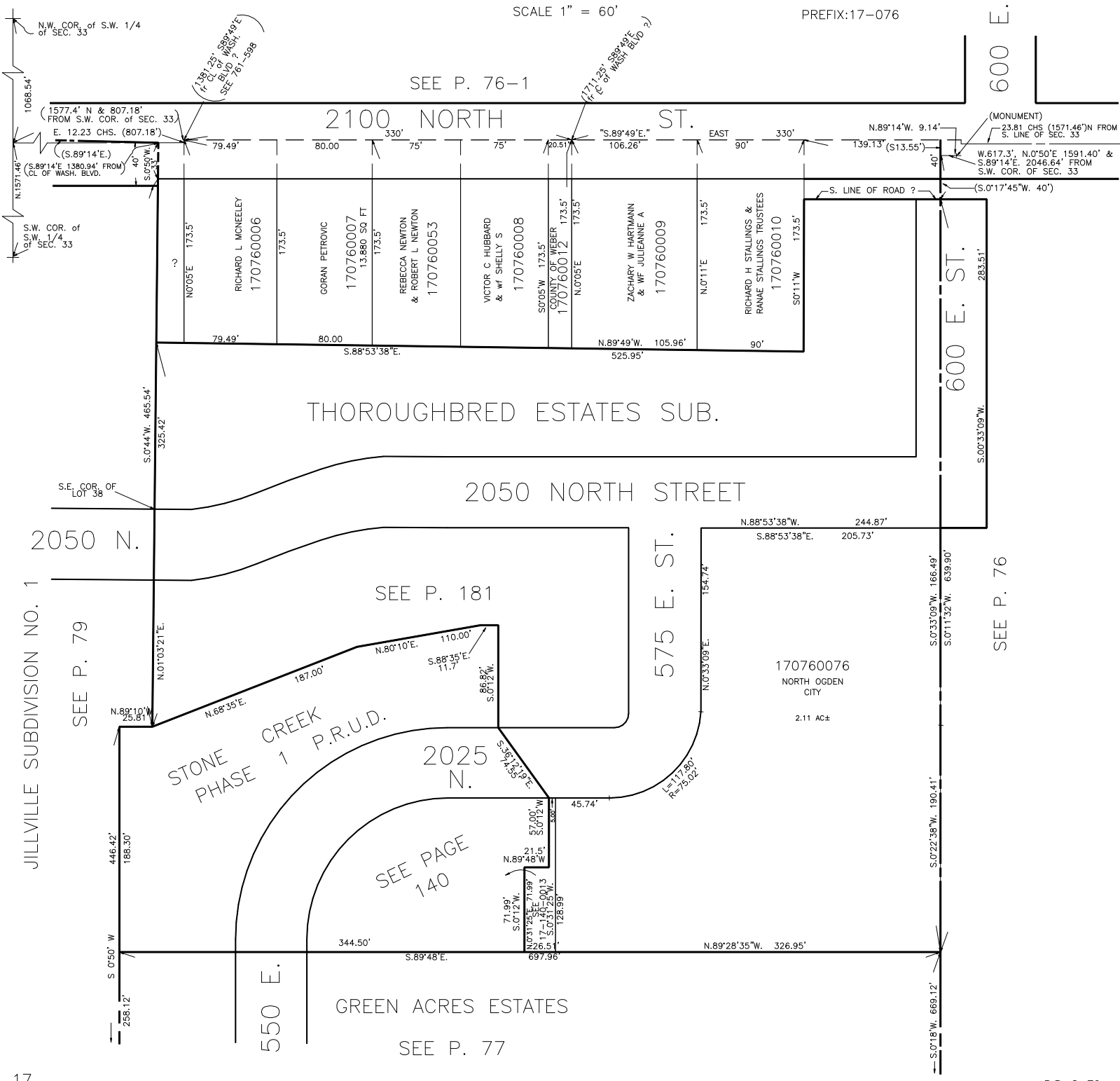
IN NORTH OGDEN CITY

SCALE 1" = 60'

PREFIX:17-076

600 E.

SEE P. 76-1



JILLVILLE SUBDIVISION NO. 1

SEE P. 79

SEE P. 181

SEE PAGE 140

SEE P. 76